

# Vivos New-Patient Requirements

## Photos, Models, and Imaging



### Required Extraoral Patient Photographs



**Front at Rest**



**Big Smile**



**Right Profile**



**Submentoververtex**

- Remove glasses and all jewelry, pull hair back so ears are visible, and include tops of shoulders in photos.
- Extraoral imaging is required for all ages. Optional images may include full-body front-facing, full-body right profile, and 3D facial scans.

### Required Intraoral Photographs



**Right Occlusion**



**Left Occlusion**



**Anterior Occlusion**



**Upper Arch**



**Ventral Surface of Tongue**



**Lower Arch**

- Intraoral imaging is required for all patients six years of age and older and is recommended for all other patients that do not meet the age criteria.
- Instruct the patient to bite into occlusion completely. If the patient cannot, please note it in the patient file.
- All teeth must be visible in the photo. Retract cheeks far enough to clearly capture posterior molars and overbite/overjet.
- Lift tongue to the roof of the mouth, create a suction, and open as wide as possible. Capture the lingual frenum in the photo.

## Required Digital/Analog Models



**Model Right  
Occlusion**

**Model Anterior  
Occlusion**

**Model Left  
Occlusion**



**Model Upper  
Arch**

**Model Lower  
Arch**

**Construction  
Bite**

- **Ages 5 and younger**  
Full impressions/models or a wafer wax bite impression is recommended for arch analysis.
- **Ages 6–7**  
Full impressions/models are recommended. If a full impression is not possible, a wafer wax bite impression is required.
- **Ages 8 and older**  
Full impressions are required.

### Please Note

Full impressions or models are required for the fabrication of Vivos DNA and Vivos mRNA Systems at any age. Analog or physical model images should be occluded, trimmed, and prepped properly prior to photographing. 3D digital impressions should be exported in an open-source .stl file format. The patient's natural bite is not needed for 3D files; however, a construction bite with 2–3 mm of posterior minimum contact spacing is required for Vivos Dual SNA systems, and 4–5 mm of posterior minimum contact spacing is required for Vivos mRNA systems.

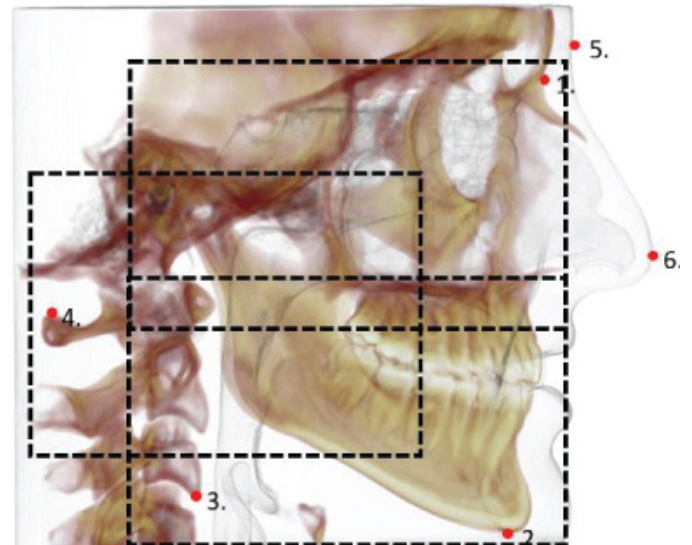
## Imaging Requirements

- **Ages 5 and younger**  
CBCT or 2D Pano and Lateral Ceph are recommended but not required.
- **Ages 6–7**  
CBCT recommended minimum requirement is 2D Pano and 2D Lateral Ceph.
- **Ages 8 and older**  
CBCT is required with diagnostic landmarks.

### CBCT landmark requirements

(1) Nasion, (2) Menton, (3) Inferior Border of C3  
(4) Spine of C1

Optional landmarks for auxiliary analysis are (5) Glabella and (6) Pronasale. If these landmarks are captured, all major anatomy will typically be visible in images.



Dicom format is required for all CBCT. EXE or INV files will not be accepted and will be returned as they are not a suitable format for our programs.

CBCT fields of view that do not include required landmarks will be returned to the treating doctor. The doctor will not receive an Airway Intelligence Report.

**If you have questions regarding new processes, please contact your practice advisor or the Vivos Help Desk prior to uploading your case.**